



Company : Apache

Well : Speke South-1

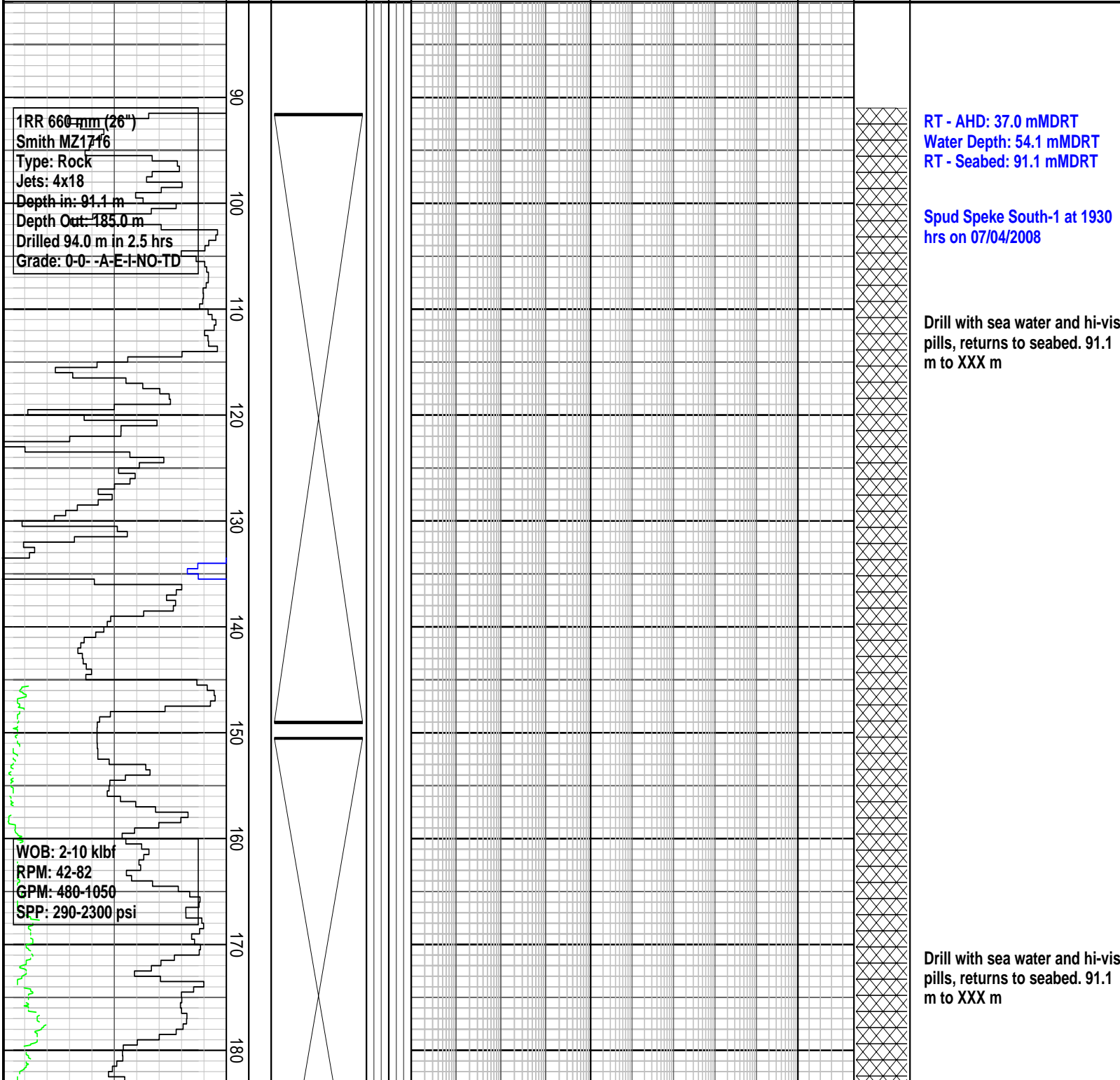
Interval : 81.00 - 910.74 meters

Created : 09/Apr/2008 5:34:59 PM

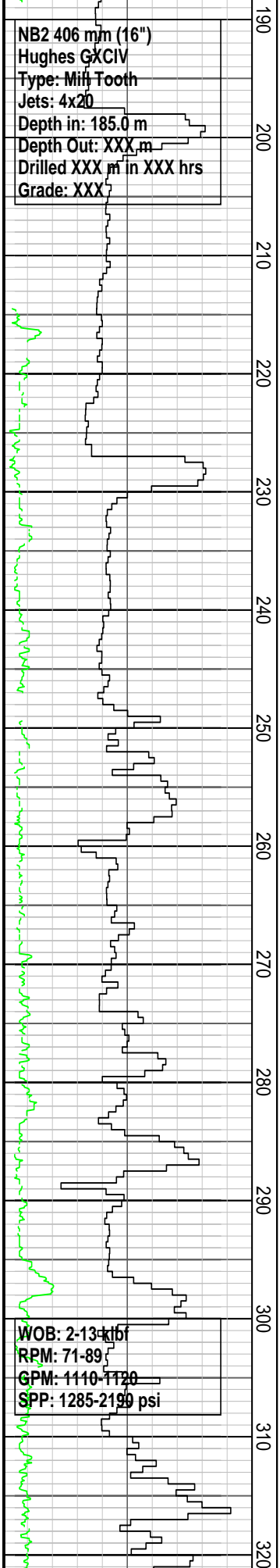
INTEQ

FORMATION EVALUATION LOG

Drilling Rate ROP (m/hr)	MD meters TVDRT meters	Cuttings Lithology	Oil Show P F G	Visual Inferred Porosity P F G	Gas Data	Chromatograph Data	Calcmetry	Interpreted Lithology	Lithology Description
ROP (m/hr)									
200									
180									
160									
140									
120									
100									
80									
60									
40									
20									
220									
240									
260									
280									
300									
320									
340									
360									
380									
400									
0									

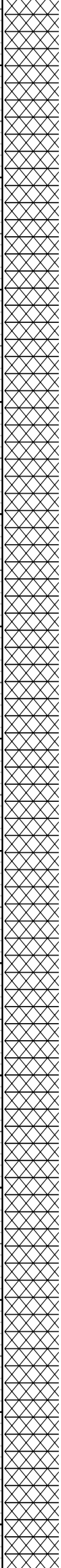
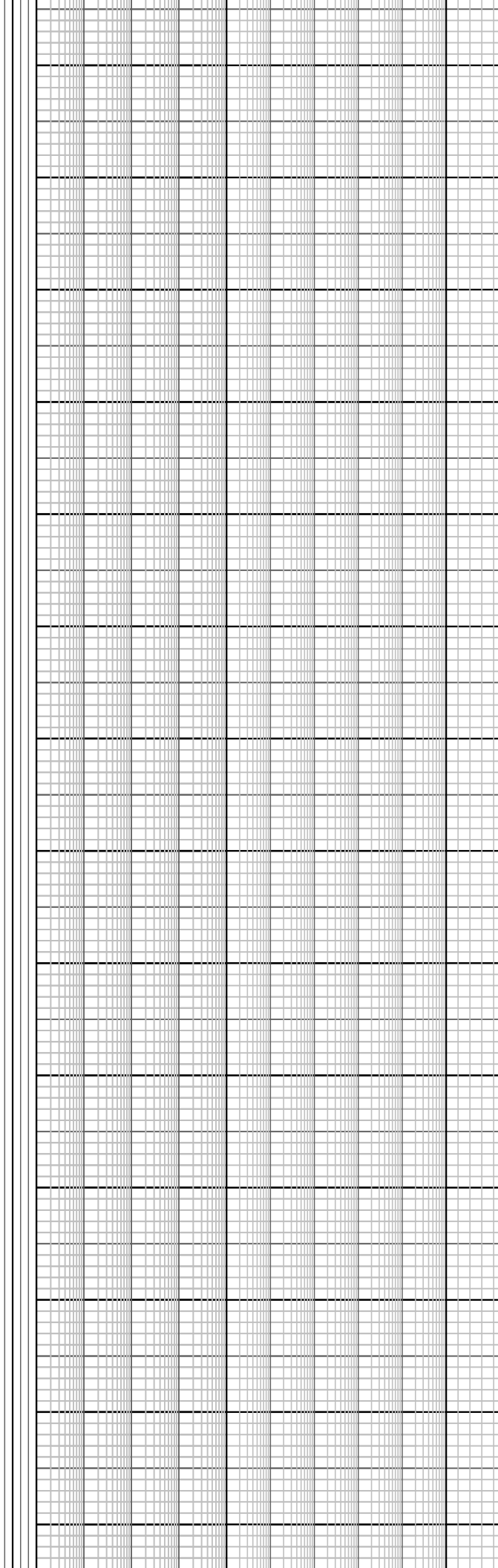
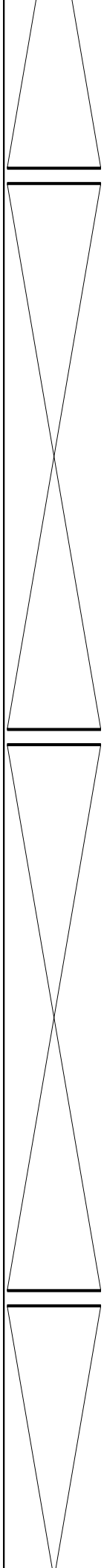


07/04/2008

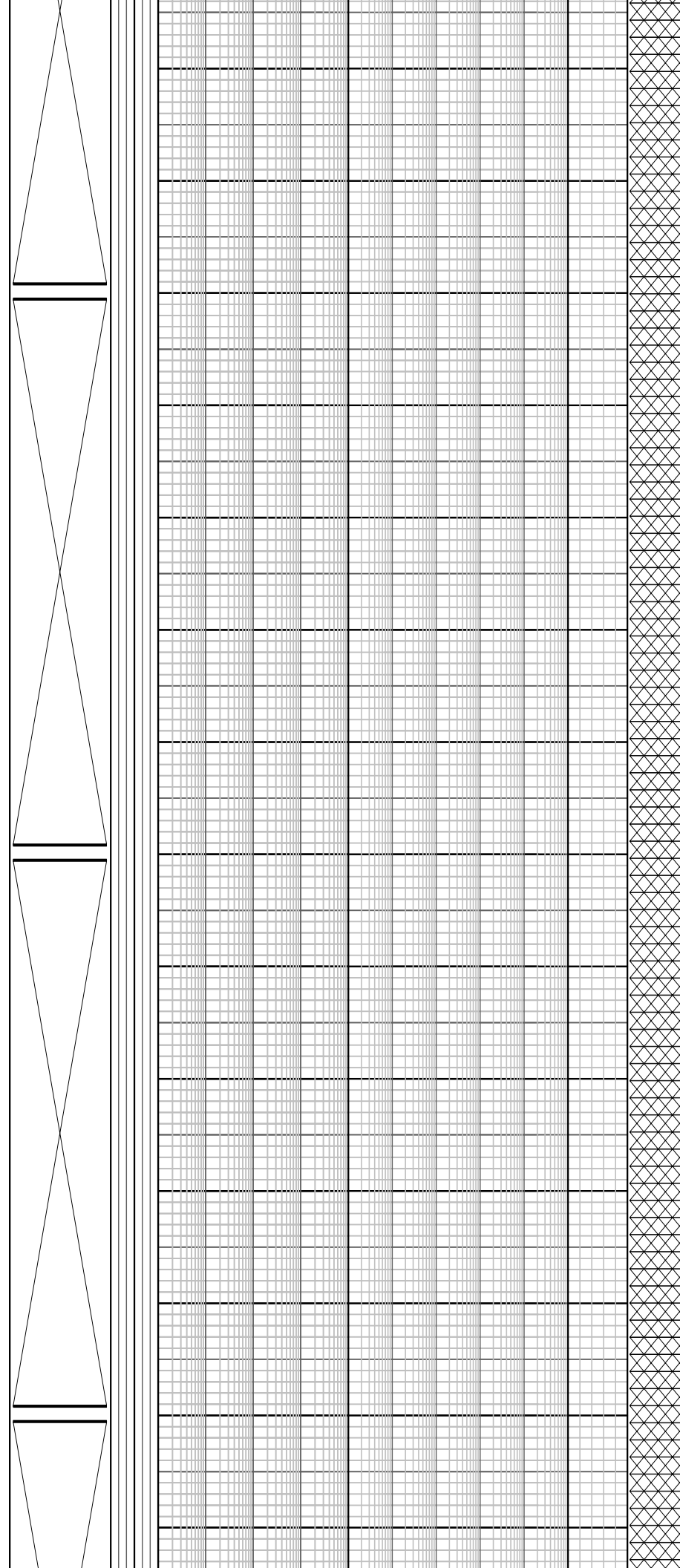
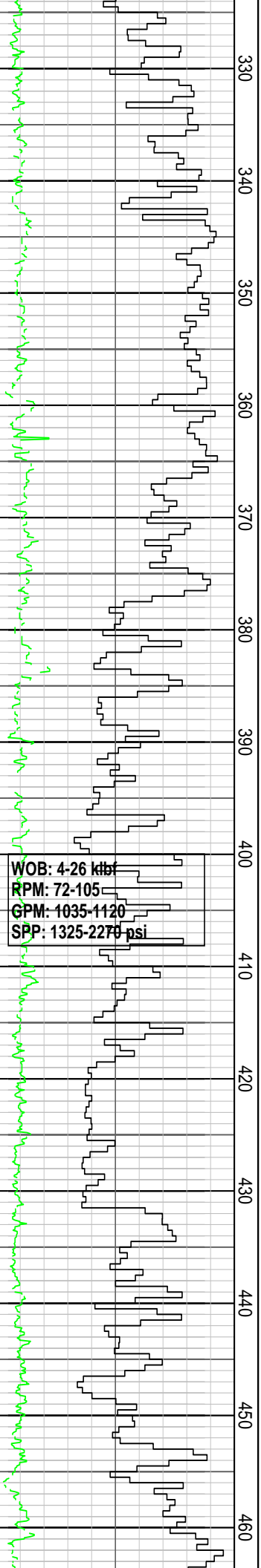


NB2 406 mm (16")
Hughes GXCIV
Type: Miif Tooth
Jets: 4x20
Depth in: 185.0 m
Depth Out: XXX m
Drilled XXX m in XXX hrs
Grade: XXX

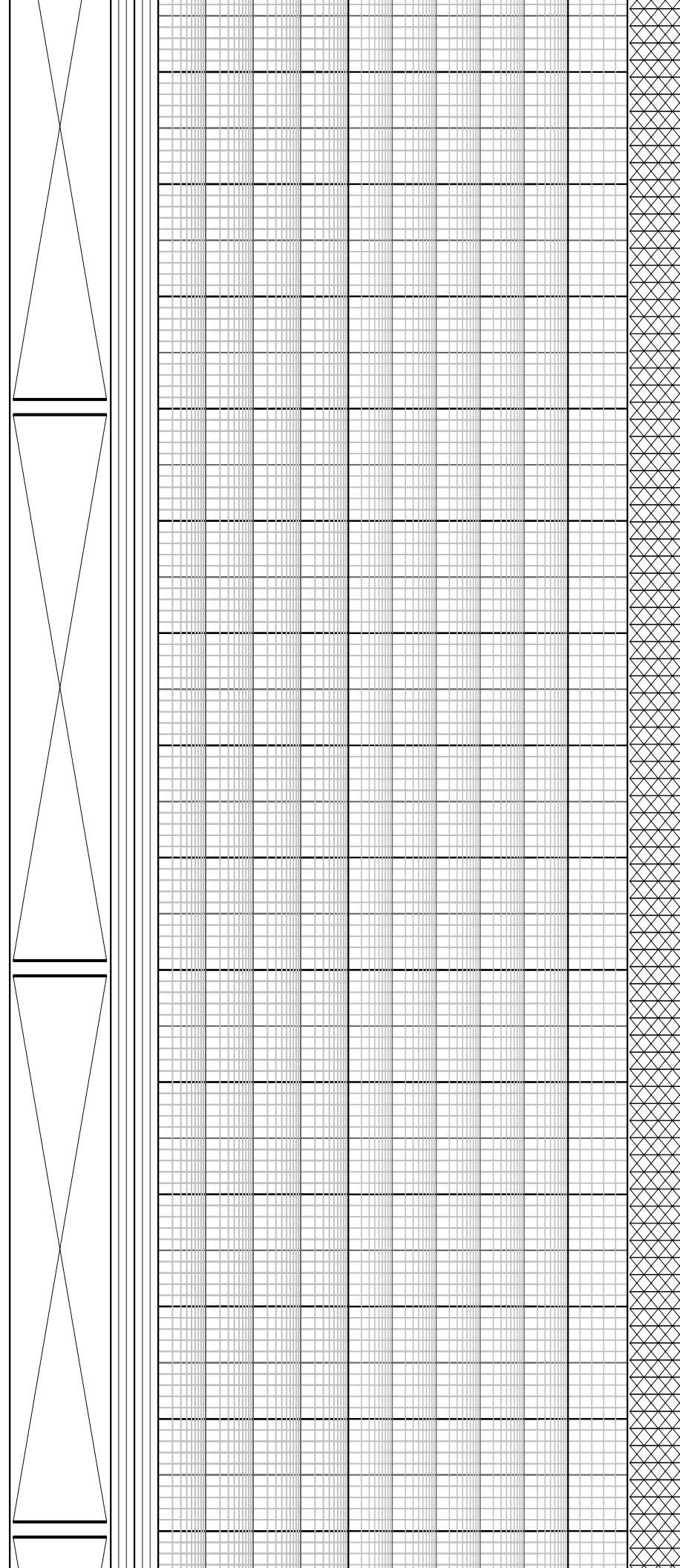
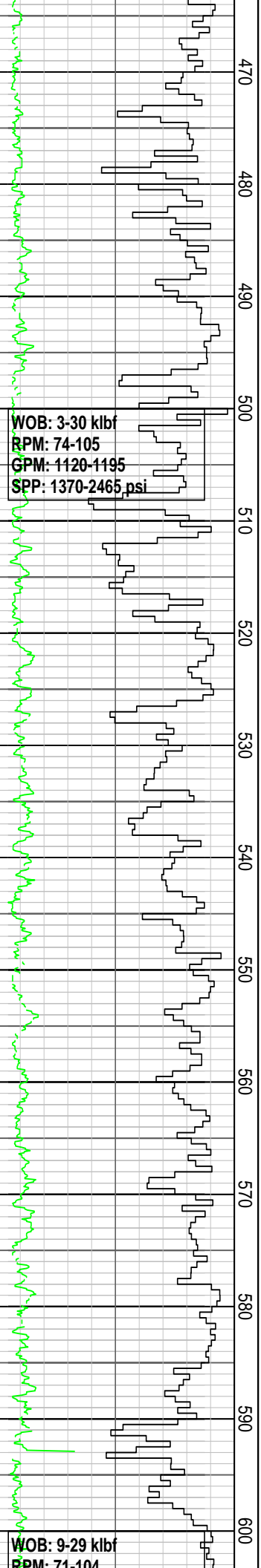
WOB: 2-13 kbf
RPM: 71-89
GPM: 1110-1120
SPP: 1285-2190 psi



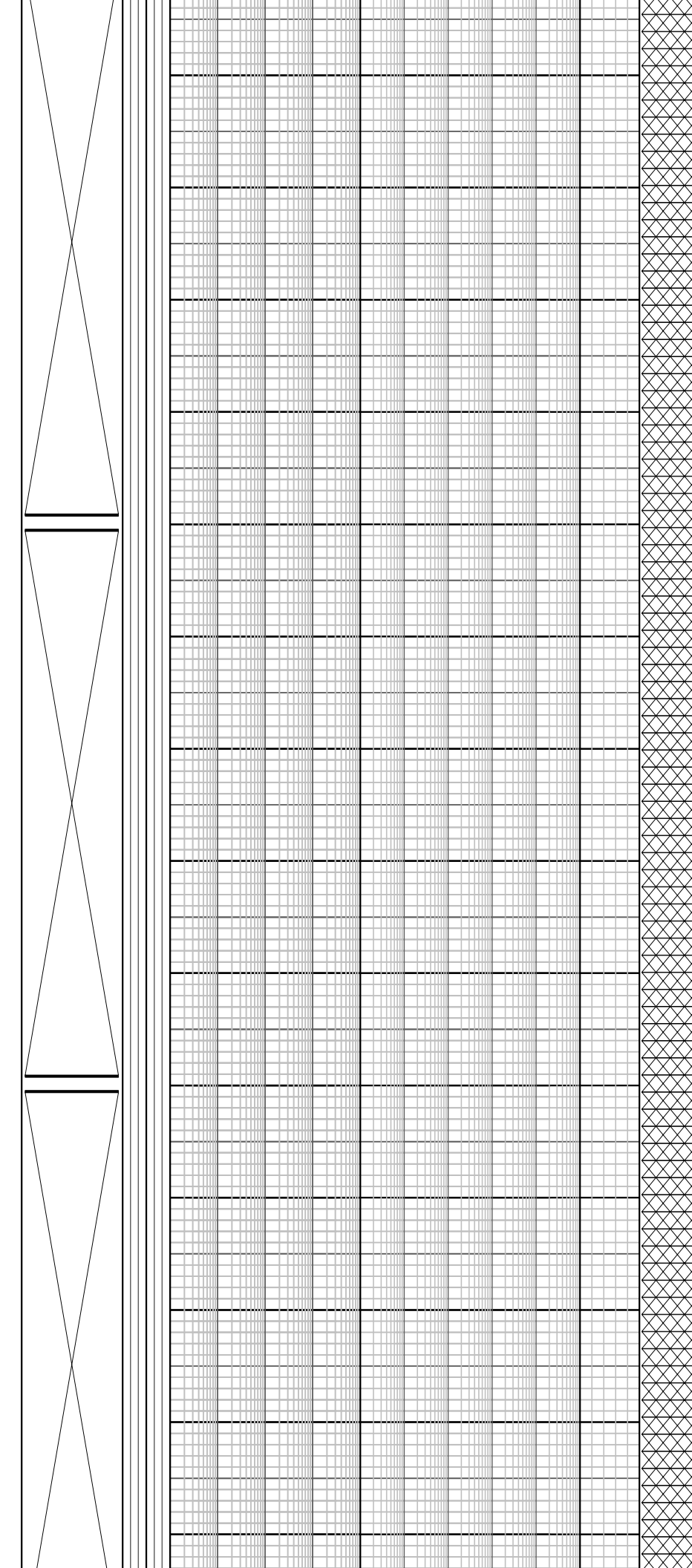
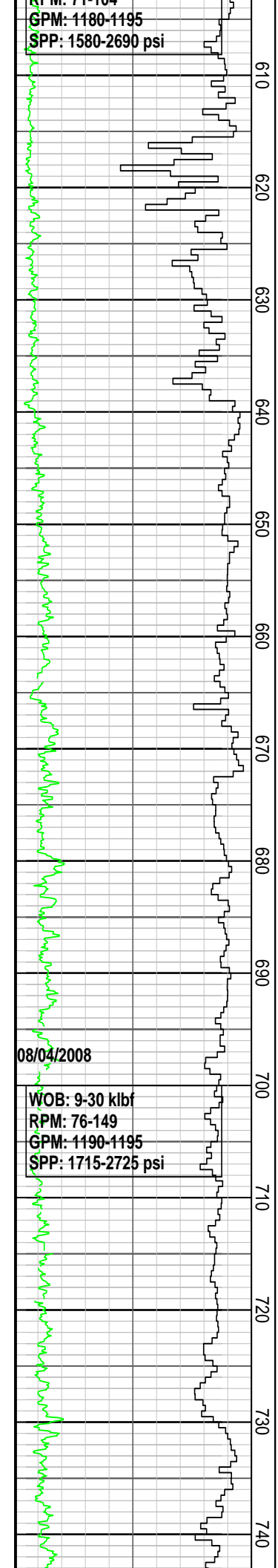
Drill with sea water and hi-vis
pills, returns to seabed. 91.1
m to XXX m



Drill with sea water and hi-vis pills, returns to seabed. 91.1 m to XXX m



Drill with sea water and hi-vis pills. returns to seabed. 01 1



pins, returns to seabed. 91.1
m to XXX m

Drill with sea water and hi-vis pills, returns to seabed. 91.1 m to XXX m

